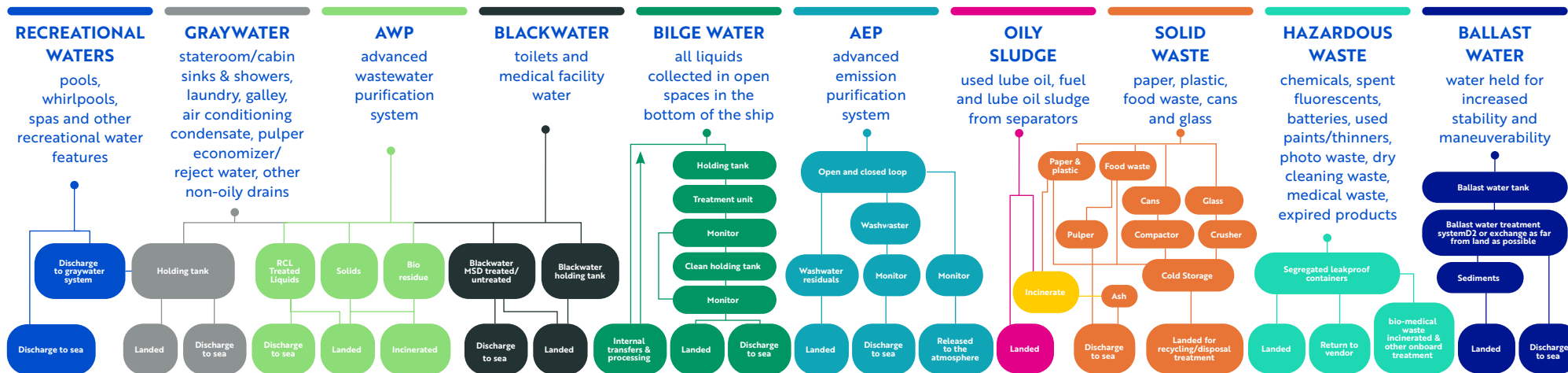


Royal Caribbean Group goes beyond International Maritime Organization Standards and Laws:

This chart outlines the type of waste managed by our ships and outlines the international regulations set forth by the International Maritime Organization (IMO), including MARPOL, the convention aimed at the prevention of pollution from ships. Our mantra is continuous improvement, as such you'll see that most of our policies take us above and beyond what is mandated. This supports our efforts to sustain the planet by improving our energy efficiency, treating the water we use and diverting our waste from landfills.

TYPES OF WASTE:



| MARPOL/IMO | | ROYAL CARIBBEAN GROUP POLICY |
|---|---|---|
| RECREATIONAL WATERS | Not regulated | Recreational water must be dechlorinated if discharged beyond 4 nautical miles (NM). If water is chlorinated, it must be discharged at 12 NM and at a speed of 6 knots or greater. |
| GRAYWATER | Not regulated | Gray water can only be discharged beyond 12 NM and speed of 6 knots or greater. |
| ADVANCED WASTEWATER PURIFICATION (AWP) | Requires wastewater be treated and discharged over 3 NM, per Flag State standards and subject to local restrictions. | We requires waste water be discharged beyond 3 NM and at a speed of 6 knots or greater. |
| BLACKWATER | Untreated blackwater may be discharged beyond 12 NM or, beyond 3 NM if treated. (subject to local restrictions) | All blackwater must be treated and may only be discharged beyond 12 NM and at a speed of 6 knots or greater. |
| BILGE WATER | Bilge water must be treated to ≤ 15ppm and only discharged while the ship is underway. | Bilge water must be treated to <5ppm beyond 12 NM and at a speed of 6 knots or greater. |
| ADVANCED EMISSION PURIFICATION | AEP wash water may be discharged anywhere if meeting its discharge standards. | AEP wash water may only be discharged beyond 3 NM and while underway when meeting MARPOL Annex VI standards. |
| SOLID WASTE | Requires that waste incinerated onboard be done in an approved incinerator (exempt if installed prior to Jan. 1, 2000). | Additionally requires all incineration to be conducted outside of ports, harbors or estuaries. |
| "LANDED" WASTE | IMO requires waste is "landed" to locally approved and licensed waste vendors. | "Landed" waste must go only to a licensed waste contractor, processing/disposal facility that meets RCL vendor approval standards. |
| FOOD WASTE | Requires food waste to be pulverized/comminuted to <25mm before being discharged at >3 NM or >12NM if in a special area. | Requires food waste be pulverized/comminuted to <25mm before being discharged at >12 NM and at a speed of 6 knots or greater. |
| BALLAST WATER | The Ballast Water Convention requires ballast water only be discharged overboard if treated through BWTS in accordance with IMO guidelines or exchange mid-ocean. | We further requires it to be treated by a US Coast Guard approved ballast treatment system or exchanged as far from land as possible then discharged beyond 12 NM or as per local restrictions. |