



ARTIST
DISCOVERY
PROGRAM

**LEGEND
OF THE SEAS**



ROYAL CARIBBEAN'S

ARTIST DISCOVERY PROGRAM

Royal Caribbean International continues the "Artist Discovery Program" onboard *Legend of the Seas*. In this program, up-and-coming artists from the Caribbean & Central America can put their work on display for millions of vacationers who will set sail for years to come.

The program's purpose is to infuse every region's spirit into the curated art collections onboard ships, highlighting and celebrating the very destinations and their people at the heart of Royal Caribbean's memorable vacations.

The group of budding artists, making up the Artist Discovery Program, will be commissioned to paint large-scale murals in six highly visible locations. Each piece will invoke the vibrancy of the Caribbean, joining the collection onboard that will include an array of pieces created by Caribbean artists or inspired by the region.

ARTIST DISCOVERY PROGRAM IN BRIEF

LEGEND LAUNCHING SUMMER 2026

LOCATION

Installation Location: Turku, Finland onboard **Legend of the Seas**

ELIGIBILITY

Artist or art teams living in any of Royal Caribbean's Caribbean cruise destinations

INTRODUCTION

Royal Caribbean is continuing its "Artist Discovery Program" to spotlight up-and-coming artists from the destinations it visits. We are seeking artists to create large-scale murals onboard Legend of the Seas.

The program will further expand on the number of local Caribbean artists featured in Legend's art collection, while giving opportunity and exposure to artists.

SUBMISSION OPPORTUNITIES

Six (6) mural locations onboard the *Legend of the Seas*

Royal Promenade

Embarkation Area

Suite Sundeck Lobby

Suite Sundeck

Royal Promenade Entrance

Boarding

COMMISSION BUDGET

Royal Promenade \$50,000 USD

Embarkation Area \$100,000 USD

Suite Sundeck Lobby \$20,000 USD

Suite Sundeck \$30,000 USD

Royal Promenade Entrance \$10,000 USD

Boarding \$35,000 USD

HOW TO APPLY

Submit Qualifications

5 Work Samples, CV & Statement

Deadline

March 8, 2026

Submit to

artsubmission@rccl.com

TIMELINE



THE MURALS

The murals will be in six highly visible locations across the ship, including Royal Caribbean's signature Royal Promenade where a two-story mural will welcome guests as they begin their Caribbean adventure.

THE ARTISTS

Selected artists will receive a grant and work closely with Royal Caribbean International to create and bring to life their concepts. During this time, they'll join the ship, currently under construction in Turku, Finland, as artists-in-residence.

THE CURATORIAL DIRECTION

Be Bold. Be Visionary. Be the Legend.

The art program on board *Legend of the Seas* calls for work that pushes beyond the expected. This is an invitation to artists whose practice is daring, striking, and unapologetically out of the ordinary; work that challenges perception and transforms space through imagination and intent.

Conceived as an immersive visual experience, art on *Legend of the Seas* becomes presence, atmosphere, and narrative, shaping the story of a Legend in the making. The curatorial vision favors works that reward curiosity, embrace the beauty of the unexpected, and operate at the intersection of concept, materiality, and emotion.

The program celebrates the creative spirit of the Caribbean, Mexico, and Miami: places alive with color, rhythm, and story. Each work reveals a different facet of this world: light, sound, movement, and energy, showing how art transforms everyday life into something transcendent. Together, the works create an immersive environment that carries us to the heart of the region, where heritage meets imagination and the Caribbean continues to inspire new ways of seeing.

This call seeks visionary artists whose work embodies this spirit: bold perspectives that translate cultural resonance into powerful visual experiences, redefining how art lives, moves, and inspires at sea.

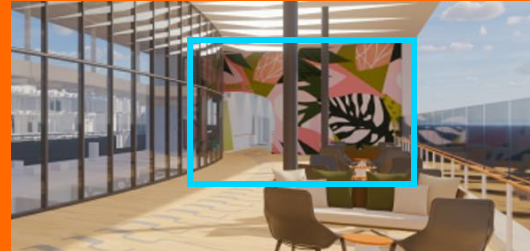
OPPORTUNITIES FOR SUBMISSION

1 ROYAL PROMENADE



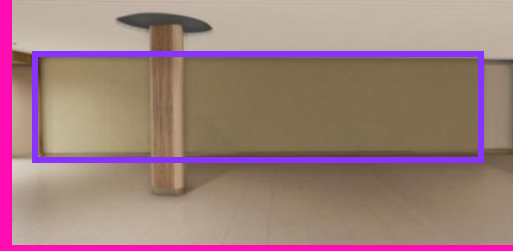
The Royal Promenade serves as the entry area to every guest's adventure. As the heartbeat of the ship, it is one of the busiest venues onboard, flanked by bars, restaurants, shopping, and entertainment options. The fun and vibrant atmosphere continues at all hours of the day and night.

2 EMBARKATION



The welcome area and outdoor lounge are a guest's first impression of their incredible vacation. There are four mural locations: two murals on the Starboard side and two murals on the Port side.

3 SUITE SUN DECK LOBBY



Welcome to the entrance of The Grove! This space features a prominent welcome mural that serves as the focal point, capturing the spirit of luxury and adventure.

4 SUITE SUN DECK (DECK 18)



The Grove is a VIP outdoor sundeck featuring a pool, hot tub, and dining throughout the day. It's an elevated retreat reserved exclusively for suite guests.

5 ROYAL PROMENADE ENTRANCE



The Royal Promenade entrance on Deck 6 FWD marks the guest's entrance into the center of the ship. This space offers artists the chance to set the tone for the fun to be had at the lively Royal Promenade.

6 BOARDING



The Boarding area on Deck 2 is a highly visible space where guests disembark and return to the ship for excursions and port visits. The mural will bring the vibrance of the communities visited into the ship.



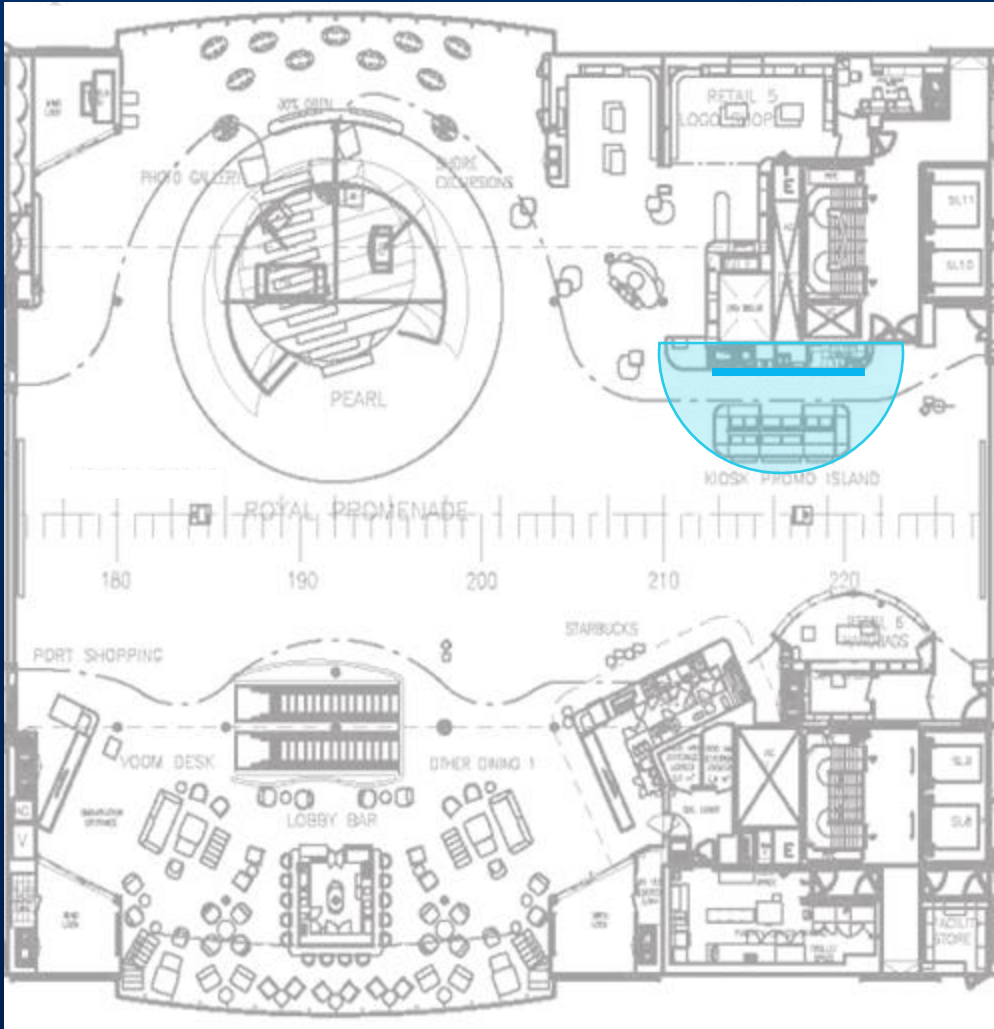
ROYAL PROMENADE

Art mural will span across two decks/floors and be separated into two facades. This is an indoor location.



ROYAL PROMENADE

FLOOR PLAN

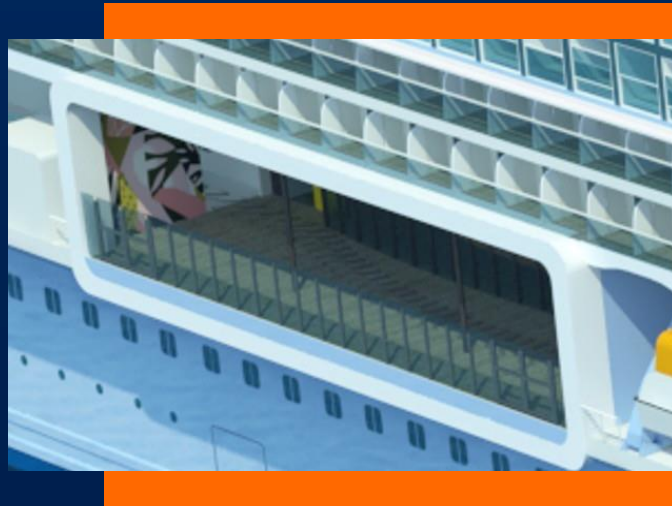
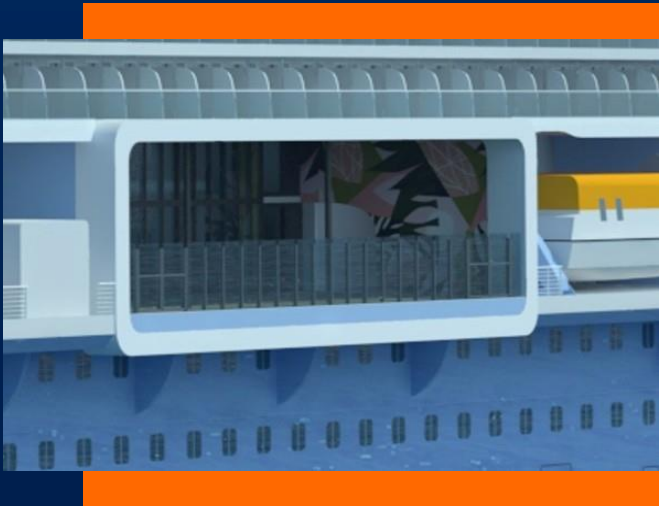


ART AREA DIMENSIONS *Approximately 50 square meters*



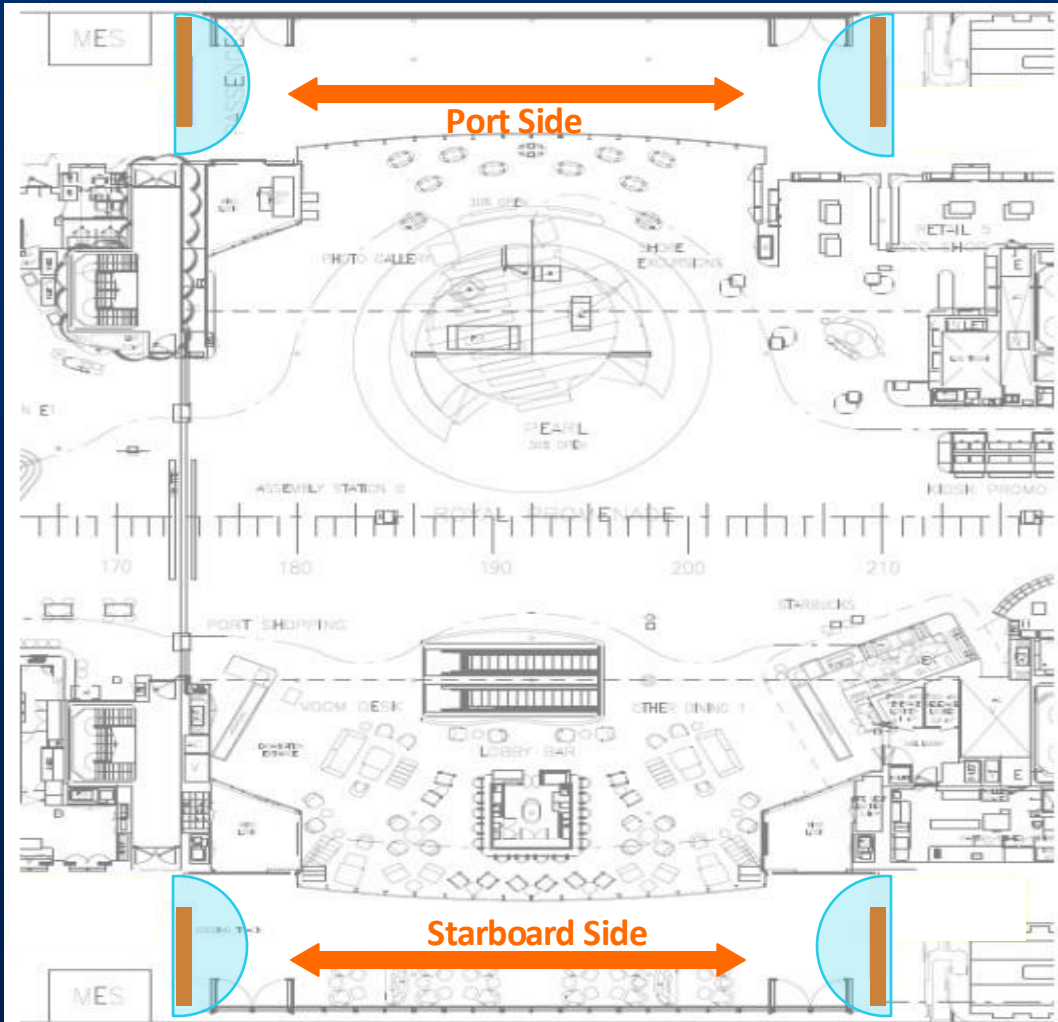
EMBARKATION

These murals will be located on the starboard and port sides of the ship. Each side will have two murals, four murals in total, with the murals positioned left and right of the entry point. The concept for each side should carry/flow into each other. These are outdoor locations.



EMBARKATION

FLOOR PLANS



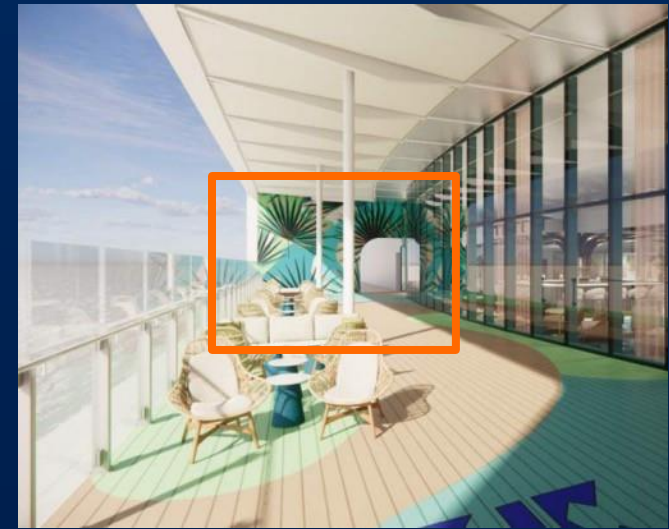
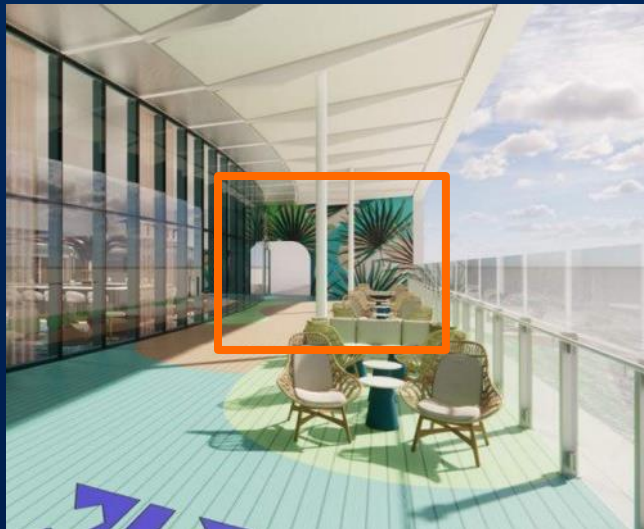
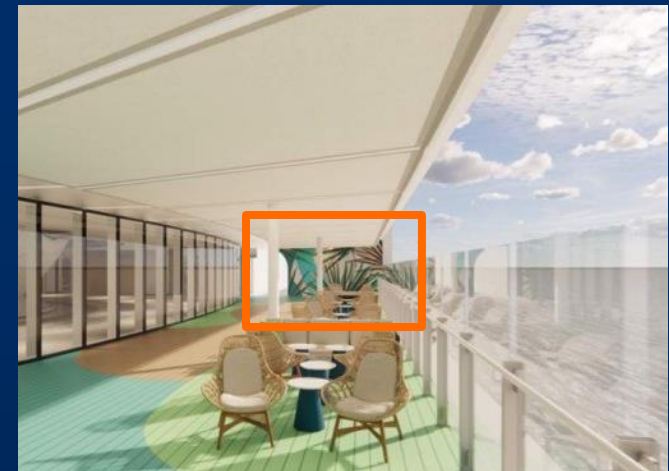
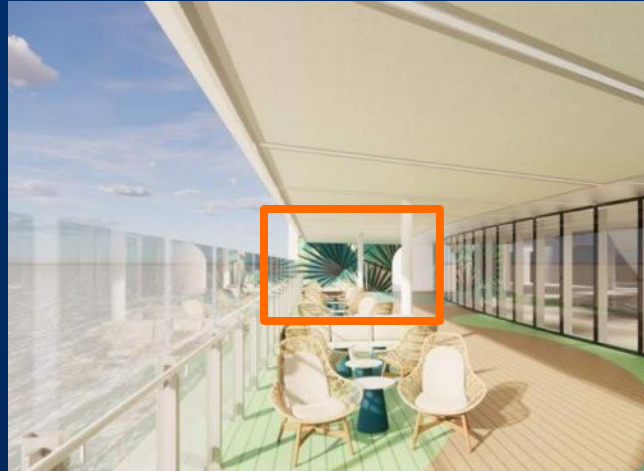
ART AREA DIMENSIONS

Starboard side:

2 murals – **50** square meters each

Port side:

2 murals – **25** square meters each



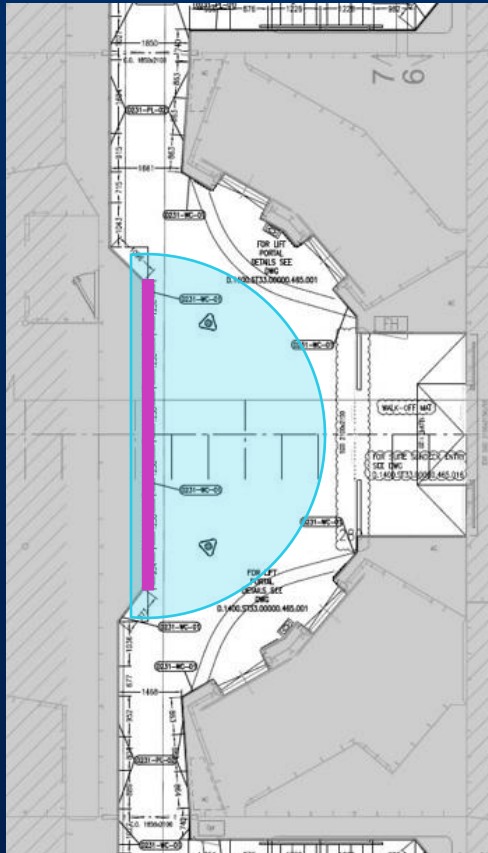
SUITE SUNDECK LOBBY

This mural will span across the lobby of the Suite Sundeck and is the focal point when guests exit the elevators. This is an indoor location.



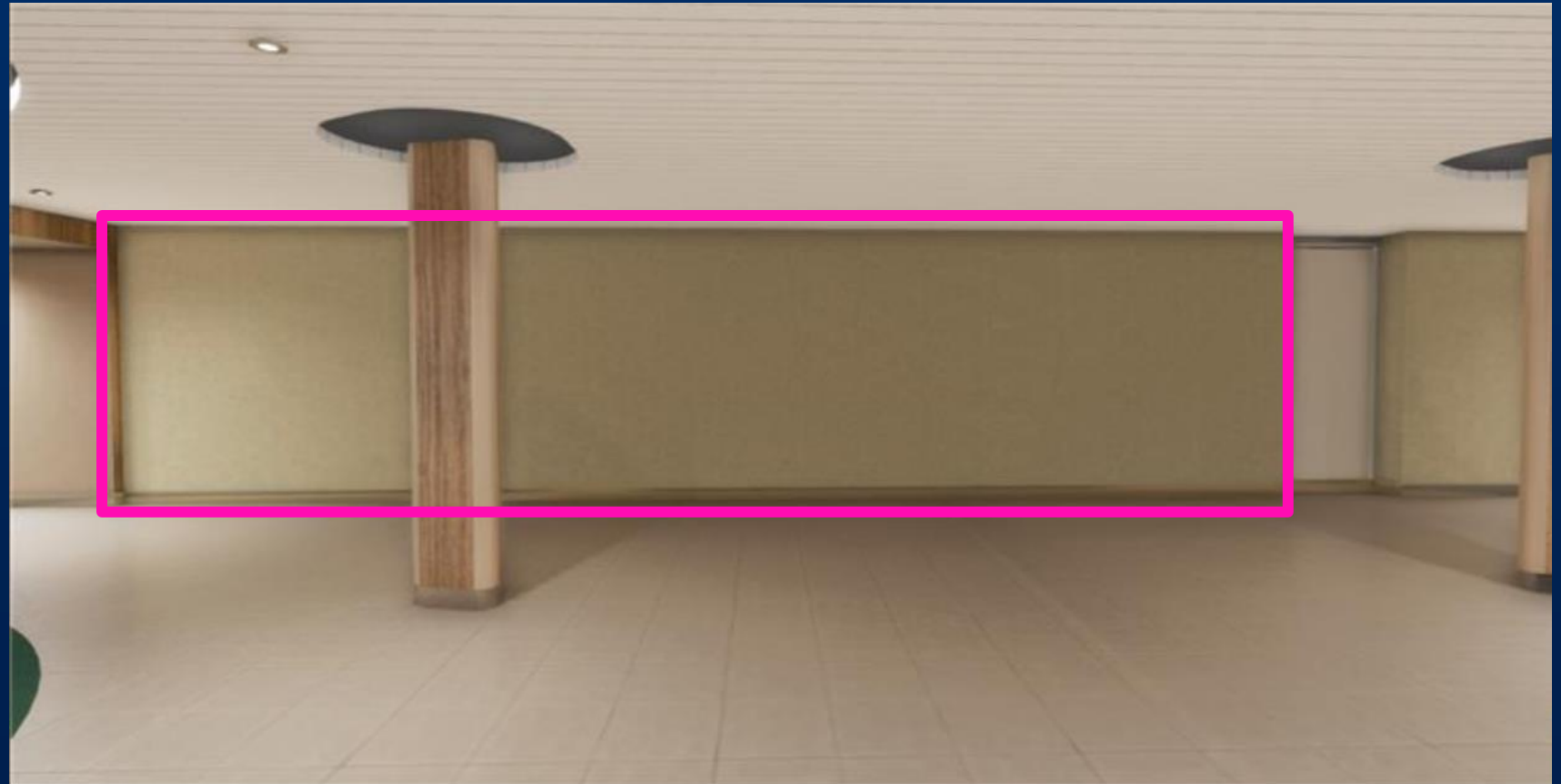
SUITE SUNDECK LOBBY

FLOOR PLANS



ART AREA DIMENSIONS

12.5 square meters



SUITE SUNDECK (DECK 18)

As guests walk into the suite only area, the mural will be located straight ahead (the focal point).
This is an indoor/outdoor venue



SUITE SUNDECK (DECK 18)

ART AREA DIMENSIONS **17.5** square meters

FLOOR PLANS



ROYAL PROMENADE ENTRANCE

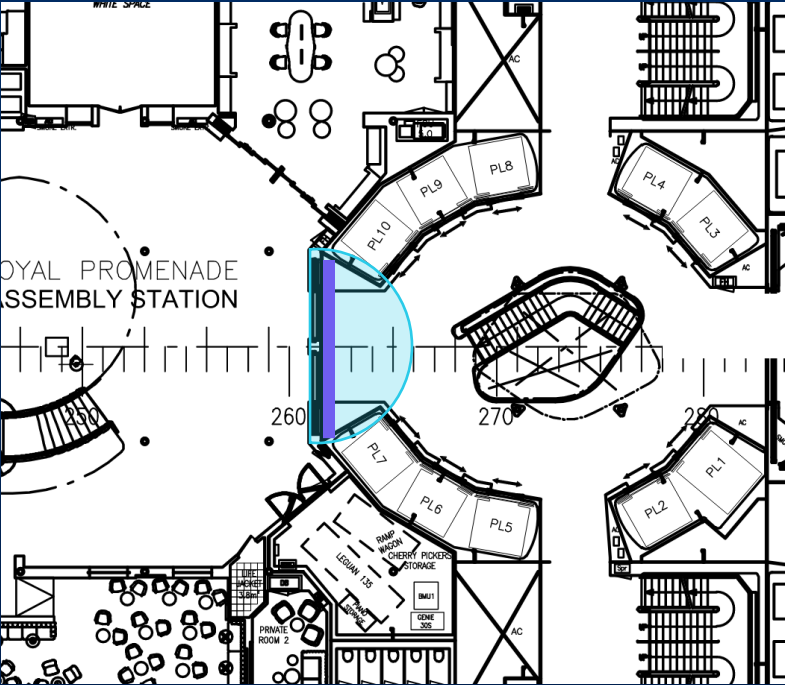
This mural will mark the entrance to the Royal Promenade on Deck 6 FWD, spanning the wall surrounding the doors. This is an indoor location.



ROYAL PROMENADE ENTRANCE

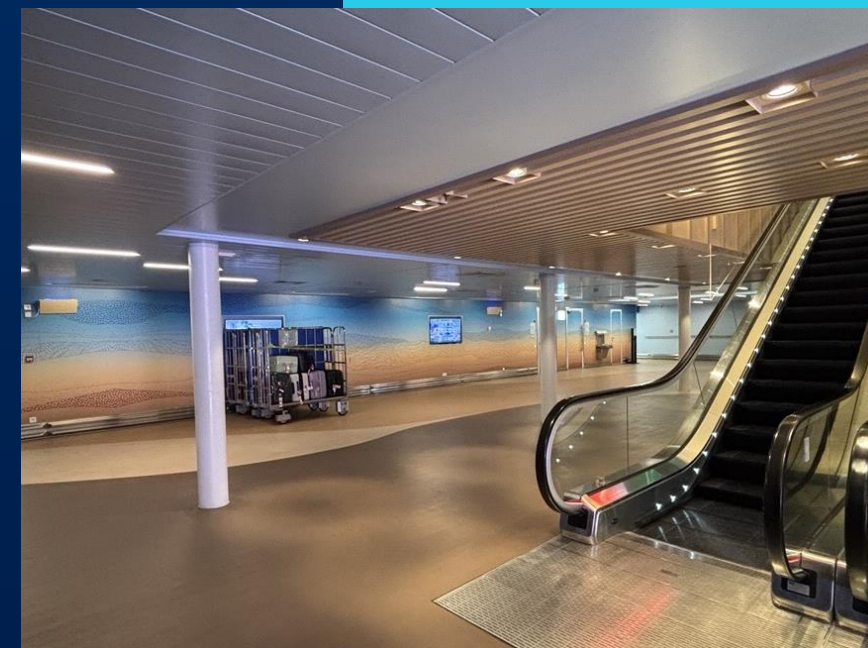
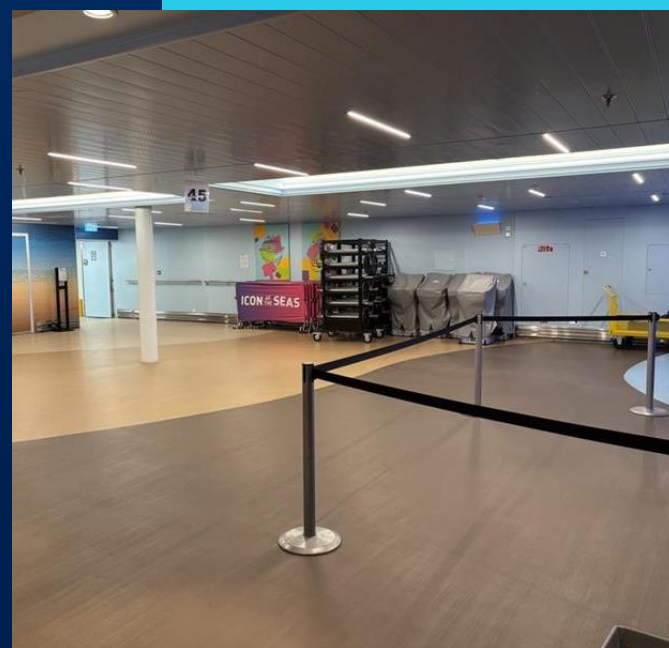
ART AREA DIMENSIONS **7.46*** square meters

FLOOR PLANS



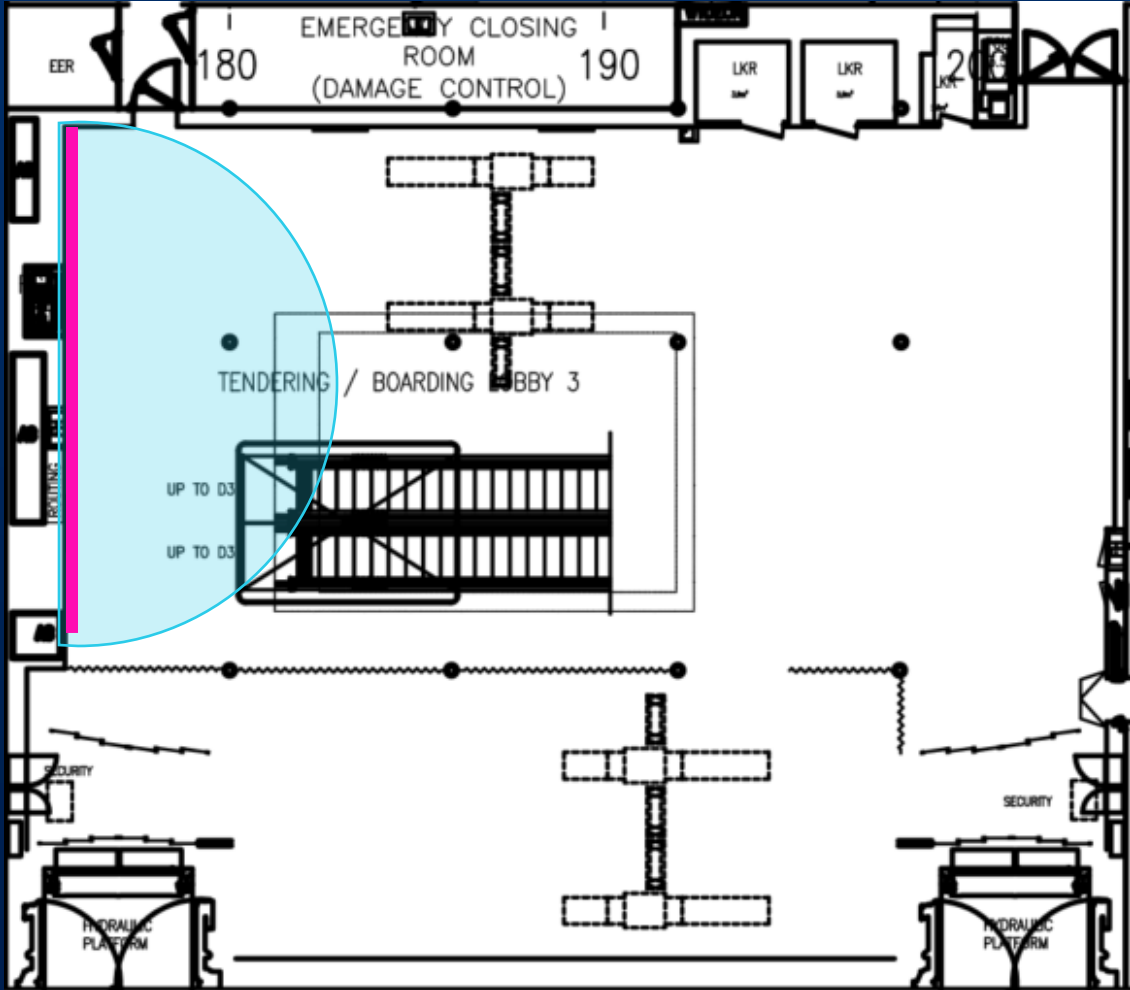
BOARDING

Art mural will span across one of the walls in the boarding area on Deck 2, a highly visible location where guests enter the ship. This is an indoor location.



BOARDING

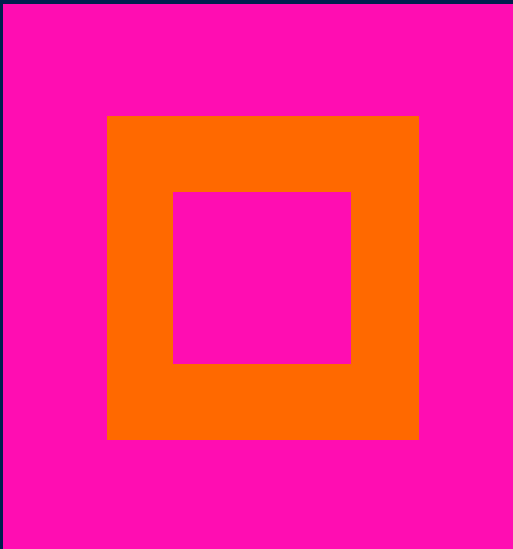
FLOOR PLAN



ART AREA DIMENSIONS Approximately **30** square meters



TERMS AND CONDITIONS



By choosing to participate in the open call for art submissions you agree to abide by the terms and conditions contained herein, along with any future terms and amendments. By making a submission you agree to grant Royal Caribbean Cruises Ltd. all its subsidiaries and affiliates a worldwide perpetual, unrestricted, non-exclusive, royalty-free, license to use the submissions including without limitation the right to store, save, publish and display both the art and your name as the artist for any purpose whatsoever.

All work submitted must be original, meaning you create the work based on your own ideas. By submitting work, each artist agrees that he or she created it and did not copy it from any other person or organization. Any work that infringes anyone's intellectual property rights will be disqualified. Artists are responsible for getting any necessary consents or releases from people or for any places or property depicted in all work submitted. Royal Caribbean Cruises Ltd. retains the right to utilize submissions for future projects.

Intellectual Property, Ownership and Moral Rights Waiver:

Upon being selected, all artists will be required to assign copyright ownership in the artwork to Royal Caribbean Cruises Ltd. Royal Caribbean Cruises Ltd. will not consider any license proposal for artwork commissioned under this program.

If selected, all artists will also be required to sign a moral rights waiver under the Visual Artists Rights Act or equivalent.



FAQS

GENERAL

1. Who Can Participate?

Open to artists or artist teams living in the Caribbean, Mexico, or Central America.

2. How to Participate?

Submit 5 samples of previous works, CV / Resume, a brief Artist Statement, **Deadline Sunday March 8th, 2026.**

Submit to: artsubmission@rccl.com

3. Can I submit for more than one opportunity?

There are 6 mural submission opportunities. Six artists or artist teams will be selected – one per mural opportunity.

Artist/artist teams can submit for consideration for all six opportunities.

4. Can I submit a past work of Art?

All work submitted must be original, meaning you create the work based on your own ideas. All work must not be currently published or on display – this should be a new creation. By submitting work, each artist agrees that he or she created it and did not copy it from any other person or organization.

5. What is included in the Commission Budget?

The commission budget is inclusive of all work, including but not limited to, artists' fees, final design, and materials required for the project. Travel and accommodations are covered separately by RCI. Artists will be covered by insurance during the installation period.

6. What type of paint can be used?

Paint used must be IMO approved. Final approval for paint will be provided by the shipyard team to ensure compliance.

7. How is my submission selected?

Mural finalists will be selected by the Royal Caribbean Art Program Committee. The committee is comprised of art/design professionals and RCI executive leaders. Final selection will be based on the artist's attention to the area's purpose/guest interaction and environment as defined within the brief (see submission opportunity slides), as well as artistic technique, handling of medium, design and creative elements, and overall impression/impact.

8. Who do I contact if I have any additional questions?

artsubmission@rccl.com

FAQS

WHAT HAPPENS IF IM SELECTED

1. Where does the installation of my art take place?

Installation of the selected art will take place onboard the Legend of the Seas in Turku, Finland, at the Meyer Turku Shipyard (www.meyerturku.fi).

2. How long do I have to install?

The installation timeline is expected to take place from May 21, 2026 to June 10, 2026. Depending on final needs, more time may be allotted.

3. Will Royal Caribbean International pay for my flights, accommodation, and other related travel costs?

Royal Caribbean will cover the selected artist's roundtrip airfare and accommodations. Artists will be accommodated onboard the Legend of the Seas during the installation period. All meals and Wi-Fi will be provided.

4. Will Royal Caribbean cover any lost wages associated with my installation time in Finland?

The budget allotted for the selected art piece covers all costs associated with the materials required (paint, application method, etc.), loss of wages, and/or any other assumed out-of-pocket expenses. Royal Caribbean will cover all costs associated with travel and lodging.

5. Will I need to bring all materials to Finland?

Royal Caribbean will assist artists in procuring necessary materials (paint, etc.) in Finland if desired. Royal Caribbean will provide any scaffolding or similar requirements for installation.

6. What if I have any medical needs during travel or installation period?

Royal Caribbean will insure artists during the installation period.



APPENDIX

ARTIST DISCOVERY PROGRAM ICON OF THE SEAS



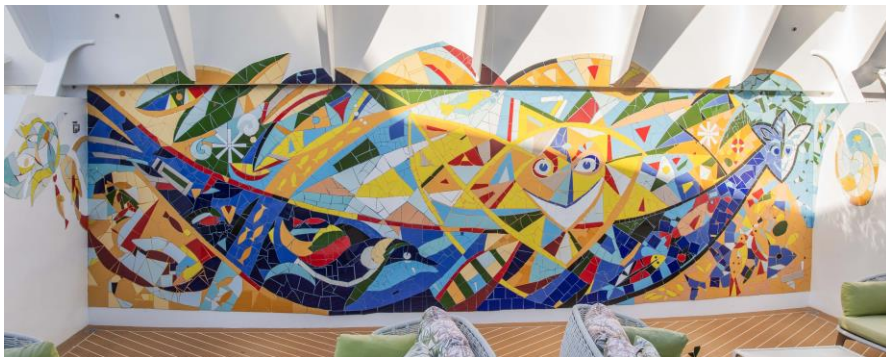
Jason Hospedales
Trinidad & Tobago

[hospedalesjason](#)



Angelika Wallace-Whitfield
Bahamas

[blaankcanvas](#)



Philippe Dodard
Haiti

[philippedodard_](#)



Philippe Dodard
Haiti

[philippedodard_](#)



APPENDIX

ARTIST DISCOVERY PROGRAM STAR OF THE SEAS



Saegel Bascombe
Trinidad & Tobago

[saegel](#)



Omar Garcia
Dominican Republic



[angurria](#)



Philippe Dodard
Haiti

[philippedodard_](#)



Anthony Smith
Jamaica

[taoszen](#)